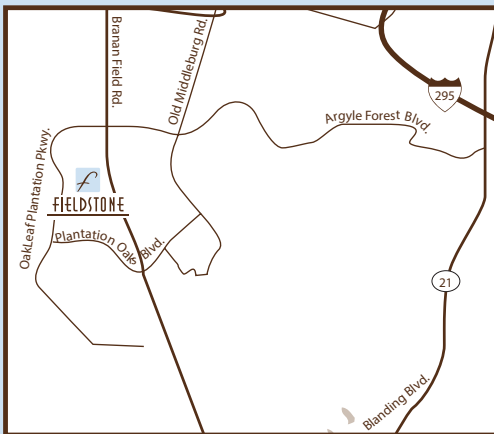




WHERE
STYLE AND LOCATION
CREATE PERFECTION

APARTMENT COMMUNITY

FIELDSTONE



DIRECTIONS

From Jacksonville:
Take I-95 South and merge onto I-295 North (exit 337). Exit at Blanding Boulevard (exit 12) towards Orange Park/Middleburg. Turn right onto Argyle Forest Boulevard which turns into OakLeaf Plantation Parkway. The community is located on the left.



FIELDSTONE

APARTMENT COMMUNITY

573 OAKLEAF PLANTATION PARKWAY
ORANGE PARK, FL 32065

PHONE: (904) 406-5317

FAX: (904) 291-2472

INFO@FIELDSTONEMILLSTONE.COM

FIELDSTONEAPARTMENTS.NET

PROFESSIONALLY MANAGED BY

LECLAIR MANAGEMENT, INC



YOUR *Home*

- 10 foot ceilings
- Ceiling fans in all rooms
- Ceramic tile flooring
- Oversized closets
- Extremely large floor plans
- Upgraded interior finishes
- Full size washer and dryer included
- Computer nooks
- Elevators

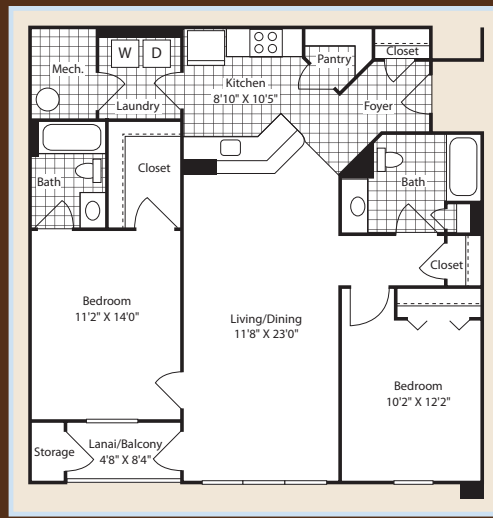
SLATESTONE

Three Bedroom, Two Bath
1,409 sq. ft.



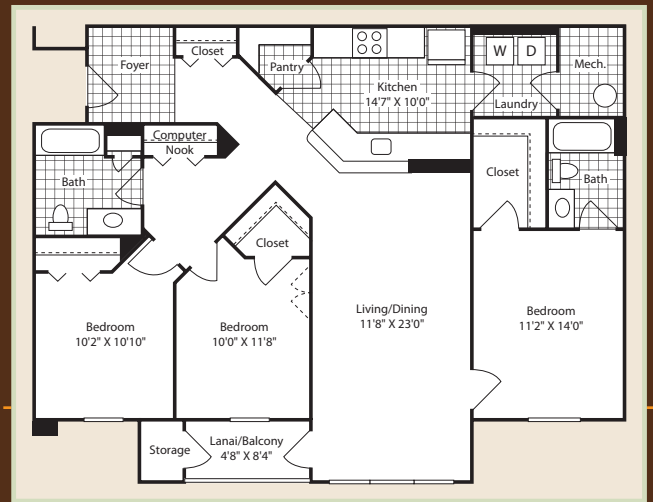
YOUR *Neighborhood*

- Highly rated Clay County Schools
- Walking paths and bike paths
- Retail shopping around the corner
- Full access to OakLeaf Amenities
 - Resort swimming
 - Tennis and basketball courts
 - Waterparks
 - Two multimillion dollar athletic centers



SANDSTONE

Two Bedroom, Two Bath
1,141 sq. ft.



GEMSTONE

Three Bedroom, Two Bath
1,784 sq. ft.

